

CONGRATULATIONS, LITTAUER

We are now ISO-9001 certified!

Safer.
Smarter.
Greener.

Be ready to celebrate with us!



Nathan Littauer Foundation 2016 Adirondack Challenge

July 8, 2016, Lake Pleasant Golf Course, Lake Pleasant, New York



We raised \$14,000!!

Thank you!!



NATHAN LITTAUER HOSPITAL

September 2016

Foundation Focus

HERE WE GROW AGAIN!

Setting the foundation for Littauer's Dialysis Center

Littauer begins in-patient dialysis

Congratulations, Littauer!
We are now ISO-9001 certified

Foundation's Kelly Colby receives the 2016

Ruth S. Voorhees Award

Strike/Lockout AVERTED,
Littauer and NYSNA reach tentative agreement

Tammy Merendo, RN
New HealthLink Director

Laurence E. Kelly, president/CEO of Nathan Littauer Hospital, with Dr. Soo Lee of American Renal Associates on the construction site of Littauer's new dialysis center



Director's Message:

We have had many proud moments during the summer of 2016. Crews are working on construction of our new outpatient dialysis center. Equipment, installations and renovations for inpatient dialysis and associated diagnostic services are nearing completion. We achieved ISO-9001 certification joining an elite class of organizations meeting these stringent international quality standards and our new Fonda primary care center is currently under construction.

You are receiving this newsletter because you helped us achieve these proud moments. You may have attended our amazing 2016 EVENT in June, played golf with us in July or made a gift in support of our dialysis center. However you decided to support our hospital, we are grateful and offer our most sincere thanks.

Geoffrey W. Peck

Littauer Foundation
Vice President - Executive Director



Dialysis update:

NLH

Inpatient Dialysis Began in September

- A Certificate of Need was approved by the New York State Department of Health in record time
- We have four inpatient beds for dialysis
- Littauer offered education to all employees in the clinical area, including: nursing, pharmacy, lab, and environmental services
- Educational modules included visits to surrounding hospitals and outpatient centers and hands-on competency
- For further information about Littauer's inpatient dialysis, contact:

Deb Henry, RN, assistant nurse manager of Patient Care Services, at ext. 5316

September 1, 2016

Nathan Littauer Hospital and New York State Nurses Association reach a mutual agreement

Nathan Littauer Hospital & Nursing Home is pleased to announce that their Registered Nurses ratified the recently negotiated contract. We are looking forward to putting the past two-and-a half years behind us. The seven-year contract spans the period from January 1, 2014 through December 31, 2020.

Littauer patients and community should know Nathan Littauer Hospital & Nursing Home has always been safely staffed and will continue to be. No staffing increases were asked for or required as part of this new contract. We are also pleased to report that we have negotiated future pay increases as well as pension and health insurance changes both sides find equitable and fair. The agreement ensures our ability to remain a strong and stable healthcare organization.

Hospital staff and administration are happy to be moving forward with a unified focus on caring for our patients.



Littauer names new director at HEALTHLINK Tammy Merendo, RN Director of community education

community and I look forward to linking people to the many health services offered, including some they may not even know about."

Prior to Littauer, Merendo worked as an RN case manager specializing in HIV/AIDS and Hospice. She has led community projects through Creative Connections Art Center, and assisted with programs such as Adirondack Friends in Need, Red Ribbon Partnership, and Flash Forward 4H group.

Merendo is also the recipient of the 1998 Excellence in Nursing award and the 2001 Most Honorable Student for Health Science Department from Southern Union Community College, 2007 Nurse of Excellence Award for Fulton-Montgomery Community College, and the 2015 Gregory Hoyer Award from Mountain Valley Hospice.

"I am thrilled to welcome Tammy as our new director at HealthLink," said Littauer VP of Communications and Public Relations Cheryl McGrattan. "Our mission is to bring healthcare into the community. Therefore, I am sure our neighbors will benefit from Tammy's integrity and enthusiasm."

Tammy grew up in Broadalbin and lives in Amsterdam.

Merendo took over her new position working out of HealthLink, at 2 Colonial Court in Johnstown, (518) 736-1120, in August.

Littauer is proud to announce Tammy Merendo, RN, as the next director of community education working for Littauer's HealthLink. She is filling a position recently vacated by the retired Sue Cridland. Merendo had previously worked as a nurse manager in the Nathan Littauer Nursing Home.

"I am enjoying this exciting new role," said Merendo. "HealthLink offers so much to the community, and this is such a pivotal time to be in public health."

Merendo is a tireless patient advocate and enjoys helping people negotiate their healthcare needs. "I love working in the com-

"Making a difference"



Kelly Colby, NL foundation coordinator, left, and Janine Dykeman, executive director, Mental Health Association in Fulton and Montgomery Counties

Nathan Littauer's Gingerbread Project

receives the

Ruth S. Voorhees Award

Kelly Colby, NL foundation coordinator, receives the **2016 Ruth S. Voorhees Award** from Janine Dykeman, executive director, Mental Health Association in Fulton and Montgomery Counties.

"For the past three years, the Mental Health Association in Fulton and Montgomery Counties has been the recipient agency of the generosity from Littauer's Gingerbread Project. The children and families that have benefitted from the project are amazed by the gifts they receive annually allowing them to have a magical Christmas."

- Janine Dykeman

HEALTHLINK LITTAUER
Wellness Education & Resources for over **25** Years



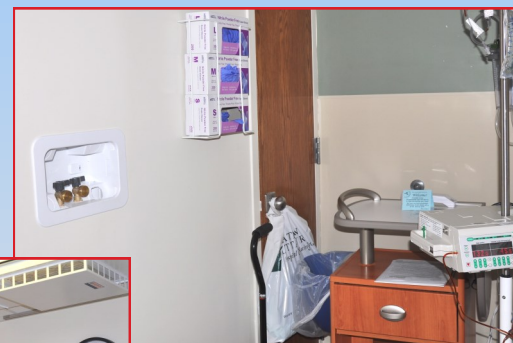
**NATHAN
LITTAUER**
Hospital & Nursing Home

New to Littauer: In-house Dialysis

As of September 2, hospitalized patients will be able to receive dialysis care in one of our four newly equipped suites.

Two are located on Three West, and two are in the Special Care Unit.

IN- HOUSE DIALYSIS



Littauer and American Renal Associates set the foundation for dialysis center

Nathan Littauer Hospital, in partnership with American Renal Associates, is proud to announce the “foundation setting” for its new state-of-the-art dialysis center in Gloversville. The new facility in Fulton County will offer the latest technology for the care and comfort of patients suffering from kidney disease.

On Friday, June 17, Nathan Littauer Hospital administrators, together with Dr. Soo Lee and Dr. Hani Shahata of American Renal Associates and local dignitaries, ceremoniously set the foundation as the construction of the center got underway.

“We are very excited about this venture with Littauer,” said Dr. Lee. “Dialysis is an essential service, and it will be a tremendous advantage to patients in Fulton County and beyond the region.”

The new dialysis center at Nathan Littauer Hospital will be the first dialysis center in Fulton County and one of the few dialysis centers in the nation attached to both a hospital and a nursing home. The center is fully prepared to serve all local patients suffering from kidney disease on an outpatient basis.

“Drs. Lee and Shahata of American Renal Associates share our mission of providing world-class healthcare services to Fulton County,” said Laurence Kelly, president/CEO of Nathan Littauer Hospital. “Our ongoing partnership with these extraordinary doctors will increase our capacity to better serve our neighbors.”

Littauer expects the dialysis center to improve the quality of life

for patients suffering from kidney disease. Many dialysis patients have to travel hours for a treatment that can last up to four hours, three times a week. It is Littauer’s mission to provide world-class healthcare locally.

As stated, the Gloversville dialysis project is unique to the area since it is adjacent to a nursing home. According to Dr. Shahata, many nursing homes cannot offer dialysis services due to the time, frequency, and transportation costs.

The new 7,000-square-foot facility will house 12 dialysis stations, with one isolation station, and will treat approximately 60 patients a week. The total cost from start to finish is \$3.5 million. Littauer anticipates being in the test phase by Dec. 1, and being open for dialysis by Jan. 1, 2017.

“This is the right project, at the right time, with the right partners,” confirmed Kelly.



From left: Vice President, Administrator/NLH Nursing Home, Leslie Beadle; Executive Director, Nathan Littauer Foundation, Geoff Peck; President and CEO, Nathan Littauer Hospital & Nursing Home, Laurence E. Kelly; Director of the Fulton County Public Health Department, Dr. Irina Gelman; American Renal Associates, Dr. Soo Lee; Littauer Auxiliary, Jean Wilkinson; Chairman, Littauer Board of Directors, Brian Hanaburgh; Board Chair, Nathan Littauer Foundation, Janine Dykeman; and Mark Kilmer, President, Fulton Montgomery Regional Chamber of Commerce



BELOW:
NLH CEO/President Laurence Kelly together with Dr. Soo Lee, of the American Renal Associates; ceremoniously set a glass block of the foundation.



NATHAN LITTAUER FOUNDATION

THE
EVENT

A Black & White Ball

June 3, 2016



Thanks to your effort, THE EVENT raised \$134,000!